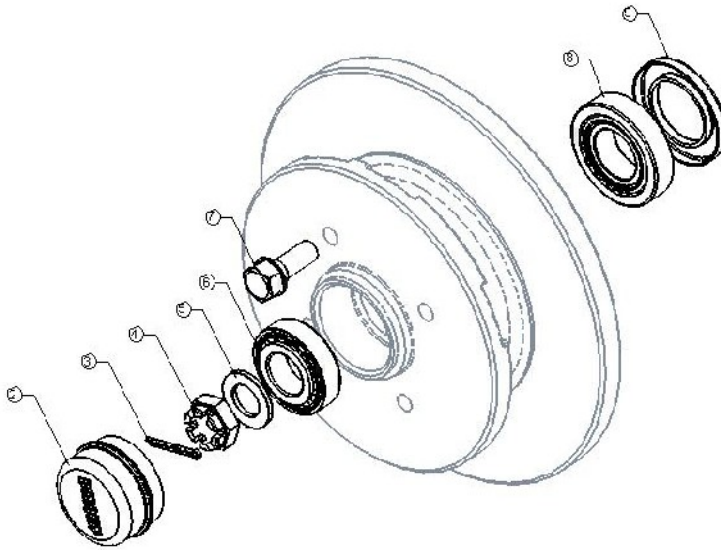


xv. **HDB250** Material Grade 17 Grey Cast Iron

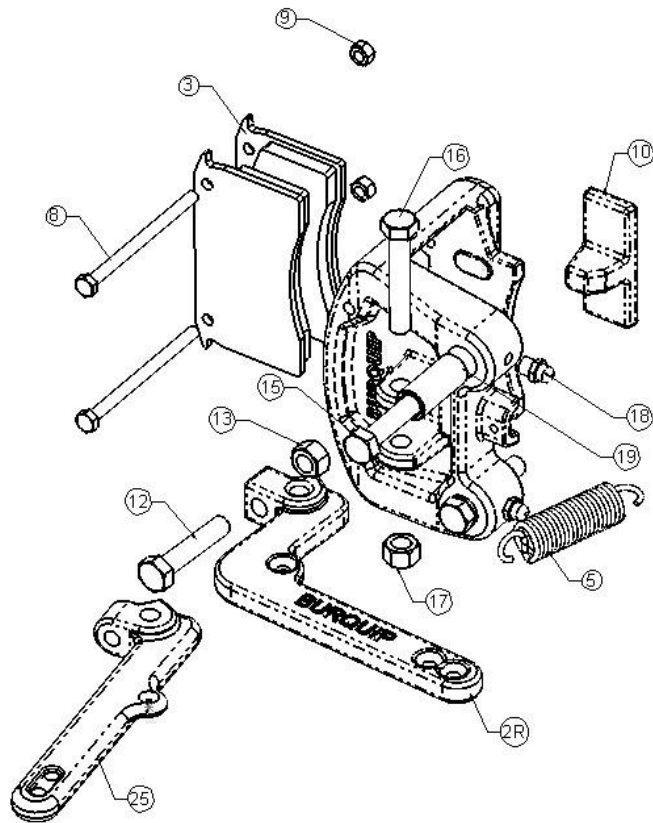


| | | | | | | |
|----|--|--|--|--|---------------------------------------|--|
| 1 | HDB250.01C 4/66/100 | HDB250.02C 5/66/114.3 | HDB250.04C 6/66/139.7 | HDB250.08SC 4/66//114.3 | HDB250.09C SPECIAL | HDB250.14C 5/66/112 |
| 2 | GCAP52.1 | GCAP52.1 | GCAP52.1 | GCAP52.1 | GCAP52.1 | GCAP52.1 |
| 3 | M3.2X36SP | M3.2X36SP | M3.2X36SP | M3.2X36SP | M3.2X36SP | M3.2X36SP |
| 4 | M18CN | M18CN | M18CN | M18CN | M18CN | M18CN |
| 5 | M20BSFW | M20BSFW | M20BSFW | M20BSFW | M20BSFW | M20BSFW |
| 6 | B30205 | B30205 | B30205 | B30205 | B30205 | B30205 |
| 7 | M12WB24 | M12WB24 | M12WB24 | M12WB24 | M12WB24 | M12WB24 |
| 8 | B30206 | B30206 | B30206 | B30206 | B30206 | B30206 |
| 9 | OS38-62-7 | OS38-62-7 | OS38-62-7 | OS38-62-7 | OS38-62-7 | OS38-62-7 |
| 10 | | | | | | |
| 11 | | | | | | |

| | |
|------------|---|
| SPARES KIT | |
| BKIT02 | 1 X B30205, 1 X B30206, 1 X OS38-62-7, 1 X M3.2X36SP, 1 X GREASE SACHET, 1 X HAND CLEANER |

Please note that the face of the disc is $\varnothing 180\text{mm}$. It can accommodate PCD 100 to 139.7mm. The design of the disc restricts us exclusively to Wheel Bolts i.e Wheel Studs CANNOT be fitted.

i. **BBC100** Material Grade 17 Grey Cast Iron



| ITEM | PART NUMBER | DESCRIPTION | QTY |
|------|-------------|---|-----|
| 1 | BBC100 | CALLIPER ASSY CPT. WITHOUT LEVER ASSY | 1 |
| 2R | BBC100LC | LEVER ASSY CRANKED FOR RUBBER SUSPENSIONS | 1 |
| 2S | BBC100LS | LEVER ASSY STRAIGHT FOR BEAM AXLES | 1 |
| 3 | BPB001 | BRAKE PAD | 2 |
| 5 | BBC100S1 | RETURN SPRING | 1 |
| 8 | M6X90S | PAD RETAINING PIN M6X90 STAINLESS STEEL | 2 |
| 9 | M6NY | NYLOCK NUT M6 | 2 |
| 10 | BBC100PP | PRESSURE PAD | 1 |
| 12 | M10X50GSS | ADJUSTING SCREW M10X50 | 1 |
| 13 | M10N | LOCK NUT M10 | 1 |
| 15 | M12X50P1.25 | MOUNTING BOLT STAINLESS STEEL M12X50X1.25 | 2 |
| 16 | M10X65G | PIVOT BOLT M10X65 | 1 |
| 17 | M10NY | NYLOCK NUT M10 | 1 |
| 18 | M6STR | GREASE NIPPLE M6 | 2 |
| 19 | BBC100SS | BUSH STAINLESS STEEL | 2 |